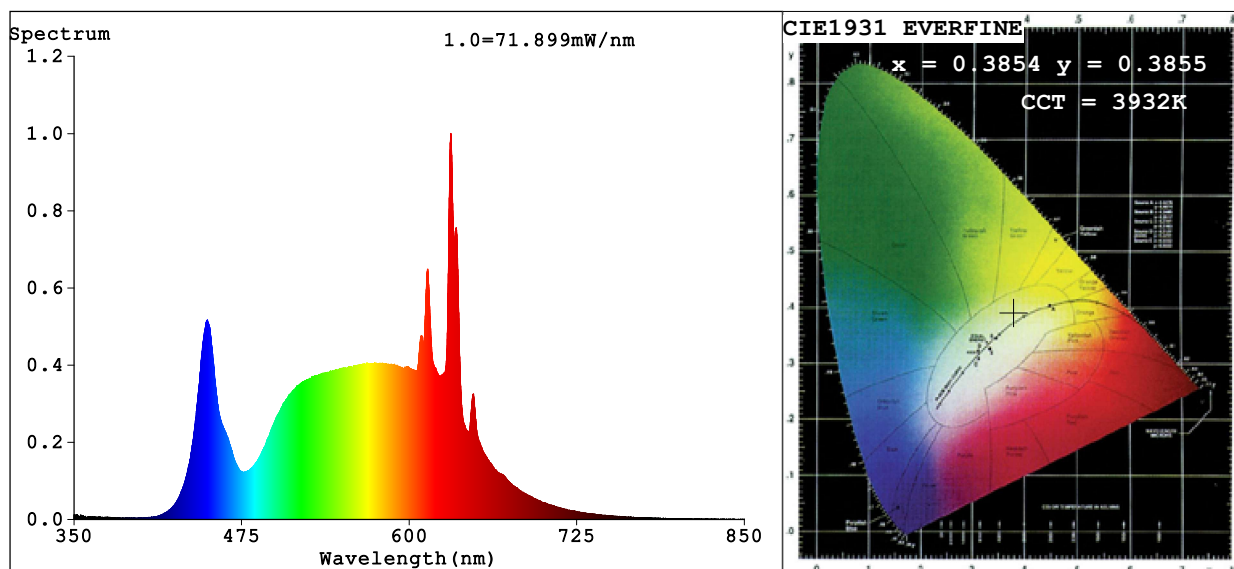


Spectrum Test Report



Color Parameters:

Chromaticity Coordinate: $x=0.3854$ $y=0.3855$ $u'=0.2249$ $v'=0.5061$

CCT=3932K (Duv=0.0026) Dominant WL:Ld =578.0nm Purity=31.4%

Ratio:R=20.0% G=76.5% B=3.5%; Peak WL:Lp=631.0nm FWHM=8.7nm

Render Index:Ra=91.7 CRI=87.7 TM30:Rf=91 Rg=101

R1 =93 R2 =93 R3 =91 R4 =94 R5 =92 R6 =90 R7 =95

R8 =87 R9 =63 R10=81 R11=93 R12=70 R13=92 R14=94 R15=90

Photo Parameters:

Flux = 1977 lm Eff. : 116.35 lm/W Fe = 6.003 W

Electrical parameters:

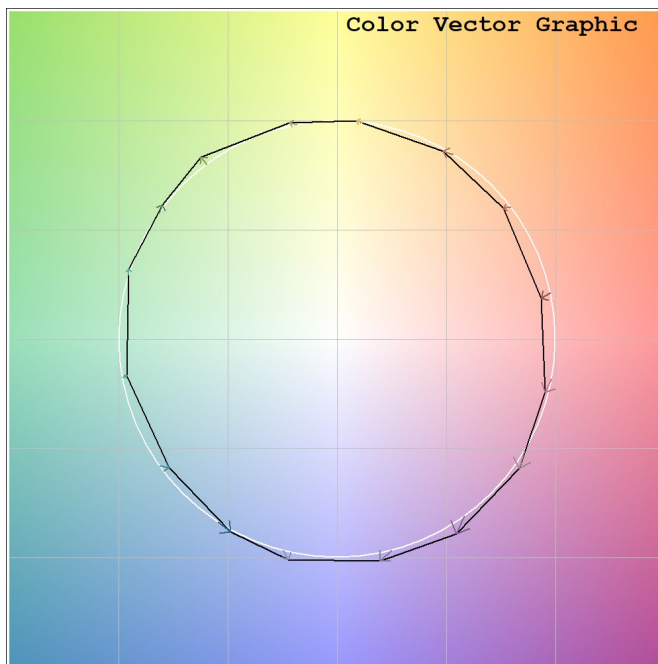
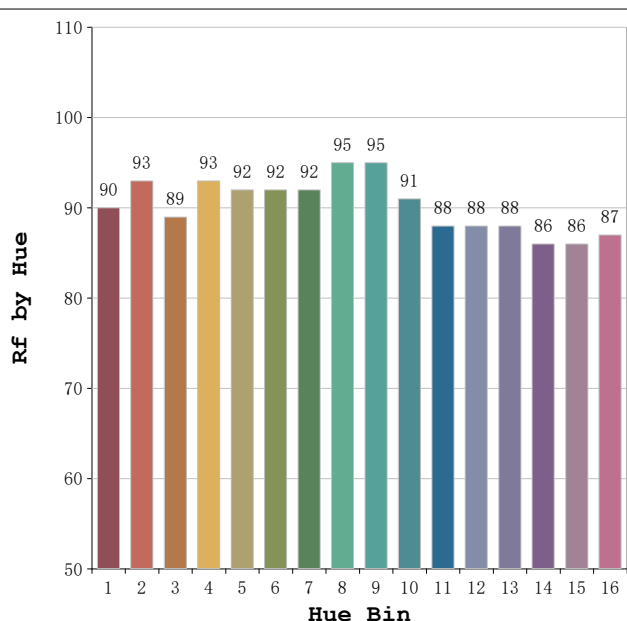
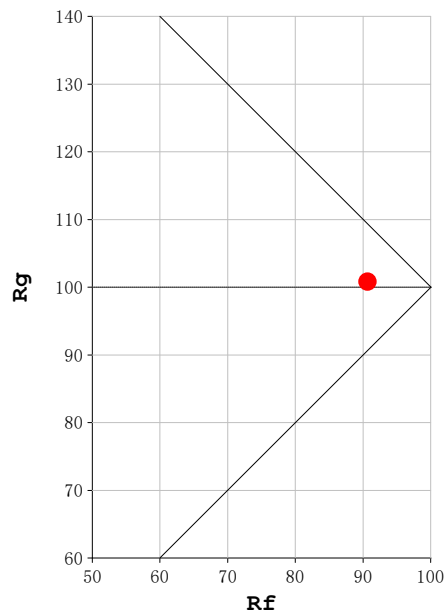
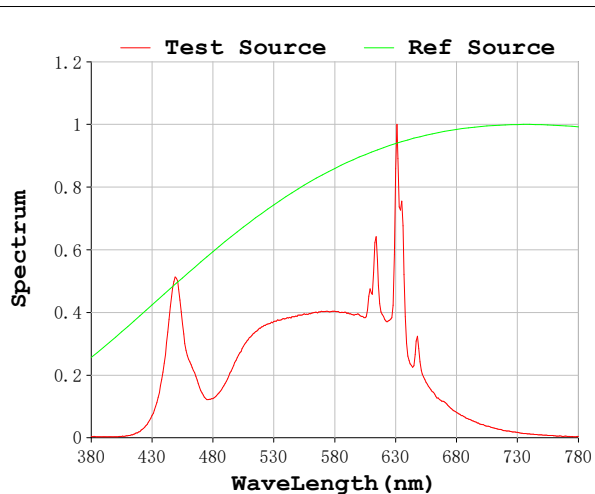
V = 230.16 V I = 0.08360 A P = 16.99 W PF = 0.8831

Status: Integral T = 436 ms Ip = 51058 (78%)

Model:Spotia 18w Negro
Tester:Sergio Carneros
Temperature:20Deg
Manufacturer:Luz Negra

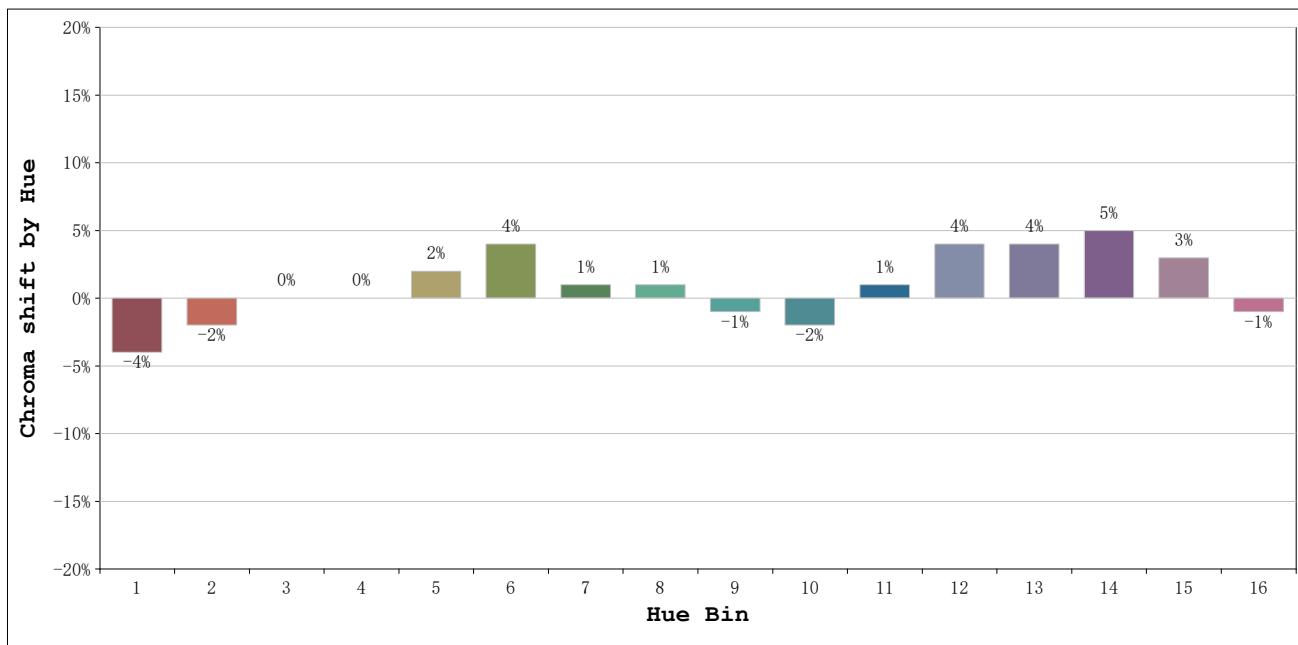
Number:4000k 37°
Date:2026-03-23 16:29:03
Humidity:50%
Remarks:1 unidad

Rf: 91 **CCT: 3932 K** **u': 0.2249**
Rg: 101 **Duv: 0.0026** **v': 0.5061**



Model:Spotia 18w Negro
 Tester:Sergio Carneros
 Temperature:20Deg
 Manufacturer:Luz Negra

Number:4000k 37°
 Date:2026-03-23 16:29:03
 Humidity:50%
 Remarks:1 unidad



Hue Bin	Hue Angle	Rf	Graphic shift(%)	
			Chroma	Hue
1	0.0° - 22.5°	90	-4	0
2	22.5° - 45.0°	93	-2	1
3	45.0° - 67.5°	89	0	5
4	67.5° - 90.0°	93	0	3
5	90.0° - 112.5°	92	2	3
6	112.5° - 135.0°	92	4	1
7	135.0° - 157.5°	92	1	-3
8	157.5° - 180.0°	95	1	-2
9	180.0° - 202.5°	95	-1	0
10	202.5° - 225.0°	91	-2	3
11	225.0° - 247.5°	88	1	7
12	247.5° - 270.0°	88	4	3
13	270.0° - 292.5°	88	4	-5
14	292.5° - 315.0°	86	5	-7
15	315.0° - 337.5°	86	3	-7
16	337.5° - 360.0°	87	-1	-6

Model:Spotia 18w Negro
 Tester:Sergio Carneros
 Temperature:20Deg
 Manufacturer:Luz Negra

Number:4000k 37°
 Date:2026-03-23 16:29:03
 Humidity:50%
 Remarks:1 unidad